

PR6 6-METER RECEIVE PREAMPLIFIER MANUAL ERRATA

Rev. A-2, February 12, 2011

1. Page 2, *Installation and Operation*, delete “The connectors may be ordered from Elecraft: order part number R-BNC-MM. Two of these connectors are required.” Insert in its place, “These connectors are supplied with your PR6.”
2. Page 3, Figure 2: In the note, change “pin 6” to “pin 11”.
3. Page 4, replace Figure 3 with the following:

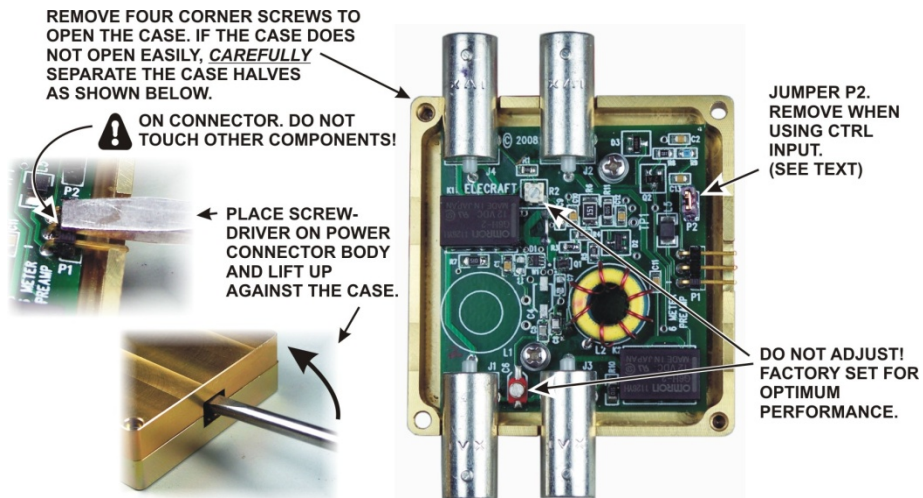


Figure 3. Jumper J2 Location.

PR6 6-METER RECEIVE PREAMPLIFIER MANUAL ERRATA

Rev. A-2, February 12, 2011

1. Page 2, *Installation and Operation*, delete “The connectors may be ordered from Elecraft: order part number R-BNC-MM. Two of these connectors are required.” Insert in its place, “These connectors are supplied with your PR6.”
2. Page 3, Figure 2: In the note, change “pin 6” to “pin 11”.
3. Page 4, replace Figure 3 with the following:

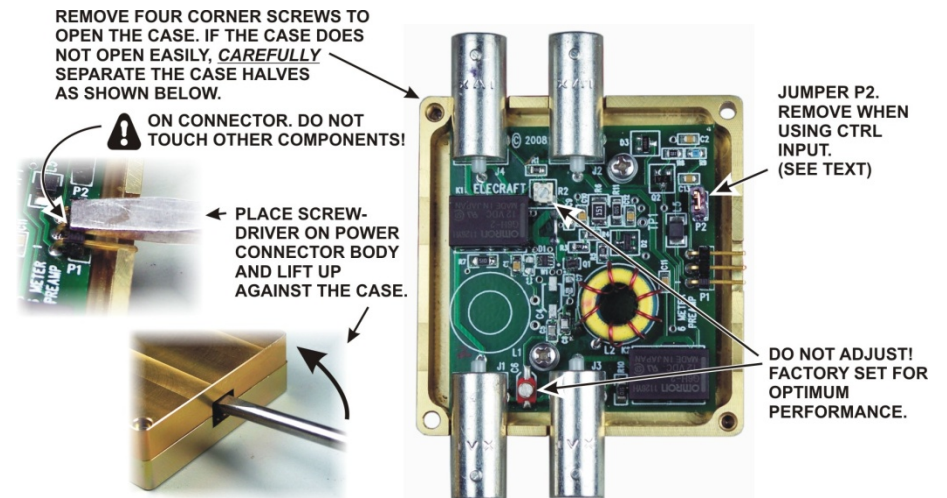


Figure 3. Jumper J2 Location.