


# KX1 OWNER'S MANUAL ERRATA

Rev. C-3, June 16, 2009

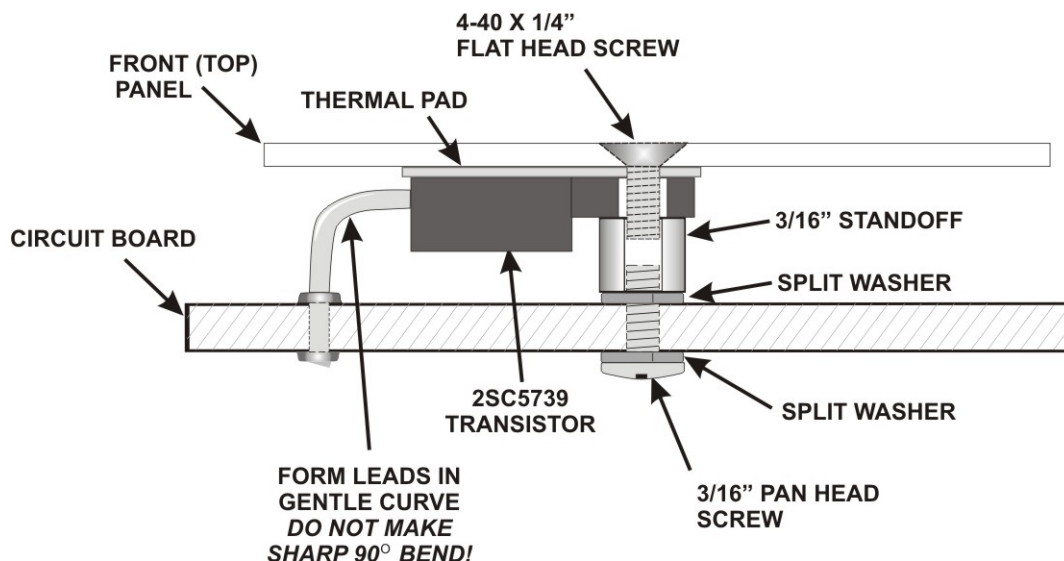
## MAKE THESE CORRECTIONS TO YOUR MANUAL BEFORE YOU BEGIN ASSEMBLY.

**NOTE: THIS ERRATA CONTAINS DRAWINGS AND STEPS THAT MAY BE CUT OUT AND PASTED OVER THE EXISTING STEPS IN YOUR MANUAL.**

1. **Page 30, Right Column, First Step:** L5, change “Micro” to “Mini”.
2. **Page 31, Right Column:** Add the following note before the first step:

 In the next step you will install inductor L5. L5 is slightly larger than the outline or spacing of the solder pad holes on the board. Bend the leads to fit into the pads.

3. **Page 31, Right Column, First Step:** L5, change “micro” to “mini (larger)”.
4. **Page 31, Left Column, Third Step:** Add the following note: “If you have the KXB3080 module to install, mount L6 on the bottom of the PC board as shown in the KXB3080 module instructions”.
5. **Page 33, Right Column, add a new step at the bottom of the column:**  
 On the bottom of the board, position L5 (installed earlier) against the board. L5 must not stand above the board or it may strike other components when the KX1 is assembled.
6. **Page 45, Right Column, Last Step:** Change “J7” to “BNC connector J2”
7. **Page 50, Left Column, First Step:** In the first sub-step, change the wire length from “24” (51 cm)” to “14” (36 cm)”
8. **Page 53, Figure 24:** Replace the figure with the following drawing. The drawing is sized so you can cut it out and paste it over the existing drawing in your manual.



9. **Page 53, Left Column First Step:** Change “(2SC2166)” to “(C5739).”

10. **Page 54, Left Column First Step:** Replace the step with the following. (The shoulder washer and nylon screw mentioned in the original step are no longer used).

- Temporarily secure Q6 to the standoff with a 4-40 flat head screw. Tighten the screw enough to hold Q6 securely and parallel to the circuit board.

11. **Page 54, Left Column:** Delete the note that begins:

 **NEVER install a metal screw in the tab of Q6 when the unit is out of its case for testing. The metal tab...**

(This caution is no longer needed with the new transistor used at Q6)

12. **Page 54, Right Column, Last Step:** Change the step to read:

- Secure the board to the cover with three 4-40 x 1/4” flat-head screws. **Do not over-tighten any of these screws.**

13. **Page A5, Parts List, L5:** Change the description to read, “min (larger size) RF choke, 5.6  $\mu$ H (grn-blu-gold)

14. **Page A5, Parts List, Last Line (Q6):** Change “2SC2166” to “2SC5739”. Add the following note to the description: “The mounting tab is black, not metal as shown”.

15. **Page A9, Parts List, Last Lines Adjacent to the Photo of the Flat Head Screw:**

- a) Delete the last line, part number E700092. (The nylon screw is no longer used)
- b) In the line above for part number E700082, change the quantity from “4” to “5”.
- c) Add the following note at the bottom of the page: “Your kit may come with the nylon screw that is no longer used and only 4 metal screws. If so, use one of the spares provided as required in place of the nylon screw. The spares are provided in case you lose one while working on your KX1.”

16. **Appendix B, Schematic Diagram, Q6 near Bottom Center:** Change “2SC2166” to “2SC5739”.

17. **Appendix D, KX1 Assembly Photographs:** Add the following note by the top photograph: “The power transistor near the top center edge of the pc board has an all black case. The mounting tab is not metal as shown in the photograph.”