

Proset-K2 Assembly and Operating Instructions

Revision B, April 9, 2006

Introduction

The Proset-K2 boomset is the result of a collaboration between Elecraft and Heil Microphones. The PROSET-K2 contains a high-performance Heil condenser microphone element optimized for SSB use. The PROSET-K2 matches the KSB2 SSB adapter, and provides excellent frequency response and gain.

Parts Inventory

QTY	Description
1	Proset-K2 Boomset
1	Elecraft (red) microphone plug adapter marked AD-1-K
1	Black Microphone Windscreen
1	5.6K ¼ W Resistor (E500007)
8	Mic. Configuration Jumper Blocks (E620055)

Assembly

The PROSET-K2 is pre-wired for the Elecraft default microphone configuration. Installation consists of placing the 8 jumper blocks straight across the pins of the K2's microphone configuration block (P1) and adding a 5.6K resistor between pin 6 and pin 1 on the rear of the K2 microphone connector.

- Remove the four exterior screws securing the K2 Front Panel assembly to the front of the K2 case and the two interior screws holding the Control Board to the Front Panel board.
- Remove the Front Panel assembly by gently pulling it away from the K2 case.

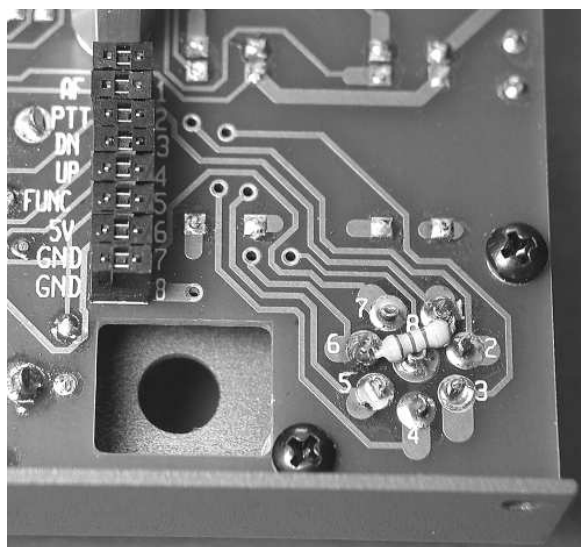


Figure 1

- Install the eight supplied jumper blocks onto the Microphone Configuration Header (P1), which is located on the rear of the Front Panel board. Install each jumper so that it connects each adjacent pair of pins. Pin 1 to AF, Pin 2 to PTT, Pin 3 to DN etc. (see Figure 1).
- Install the supplied 5.6K resistor on the rear of the 8 pin microphone connector between pin 1 and pin 6 (Fig 1). Solder each end of the resistor and trim off the excess lead length.
- Plug the Front Panel assembly back into the RF Board. Secure it to the chassis (4 screws) and Control Board (2 screws).

Headphone Plug Installation

The Heil headphone - microphone Proset comes complete with all necessary connectors but does not include a push to talk switch. Plug the gray headset microphone connector directly into the AD-1-K adaptor cord 1/8 inch receptacle. The remaining ¼ inch stereo plug pulls apart revealing a standard 1/8 inch stereo plug which connects directly to your K2 headphone jack on the front of the K2.

The ¼ inch receptacle on the AD-1-K adaptor cord is where you need to connect a user provided normally open push to talk (PTT) switch using a standard ¼ inch phone plug. Either a monaural or stereo plug connecting the switch to the AD-1-K adaptor will work quite well. PTT or push to talk switches are available in a wide variety such as a doorbell push button type switch or a floor pedal switch or even a relay contact. Whatever you choose is up to you the operator. Finally be sure to connect the eight pin AD-1-K to your K2 microphone connector located at the lower left front of the K2.

Test and Set Up

After attaching the Proset into the K2 microphone connector make sure the K2 is set to USB or LSB and is connected to a dummy load or appropriate antenna.

- Make sure the K2's SSB menu options are set up as follows: SSBA = 1; SSBC = 2. Set the power to ten watts.
- Press the PTT button and speak normally into the front of the microphone. You should observe movement on the K2's power meter.
- See "Using the SSB Adapter" on pages 21- 22 of the KSB2 manual for SSB set up and operation. Normal SSB menu settings for the PROSET-K2 are: SSBA = 1 (3 for softer

voices); SSBC = 1 (no compression), 2 (low), 3 (medium) and 4 (strong). Most users set compression at SSBC 2 or 3.

You may wish to optimize the K2's transmit audio by adjusting the **BF1t** settings for USB and LSB. See "SSB Transmit BFO Optimization" on page 22 of the KSB2 manual. Adjusting these settings allows you to shift the K2's transmit frequency response up or down 100-400 Hz to match your personal voice characteristics and taste.

In Case of Difficulty

If you have problems getting your PROSET-K2 to operate with your K2, first confirm that you have properly installed the eight microphone configuration jumpers and the 5.6K resistor. If you have not previously confirmed the operation of your KSB2 with another microphone, refer to the troubleshooting section on page 23 of the KSB2 manual. Also, please feel free to email us at support@elecraft.com.